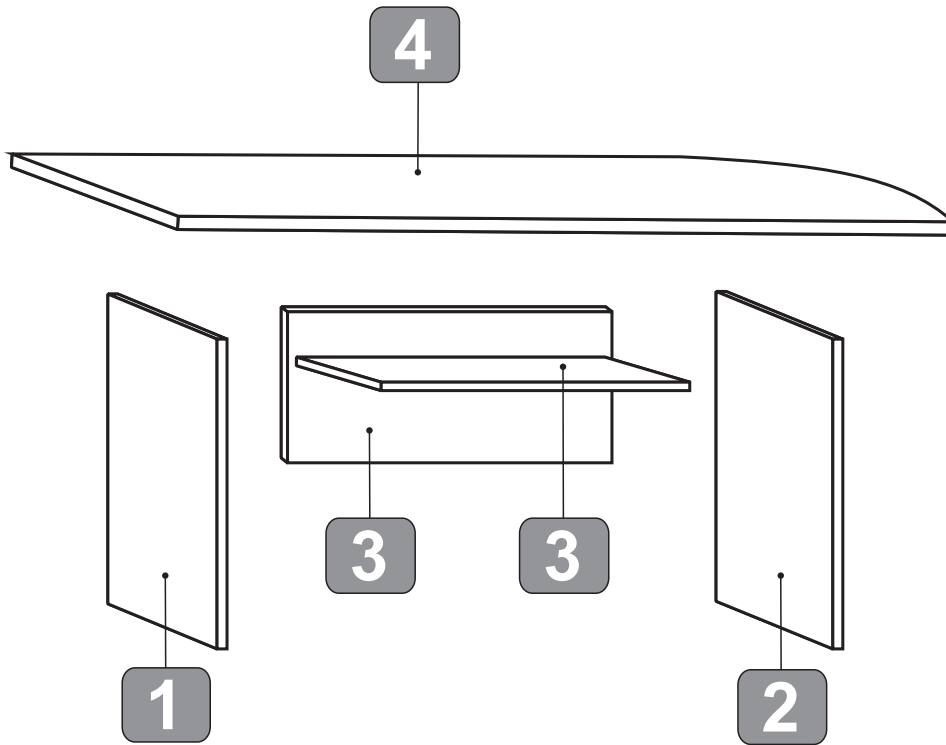
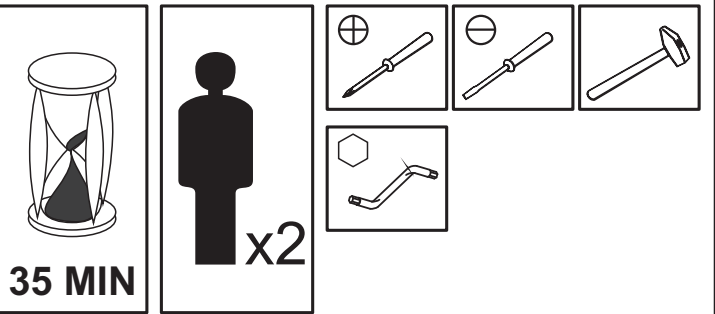
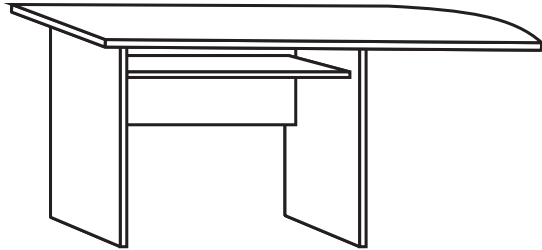


MAG EURO

03 -- 50/25



Avant de commencer, se reporter aux conseils de montage en annexe

Before starting, refer to the assembling advice in annex


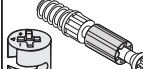




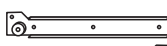




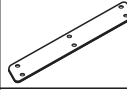


Avanti di cominciare, riportate agli consigli di montaggio

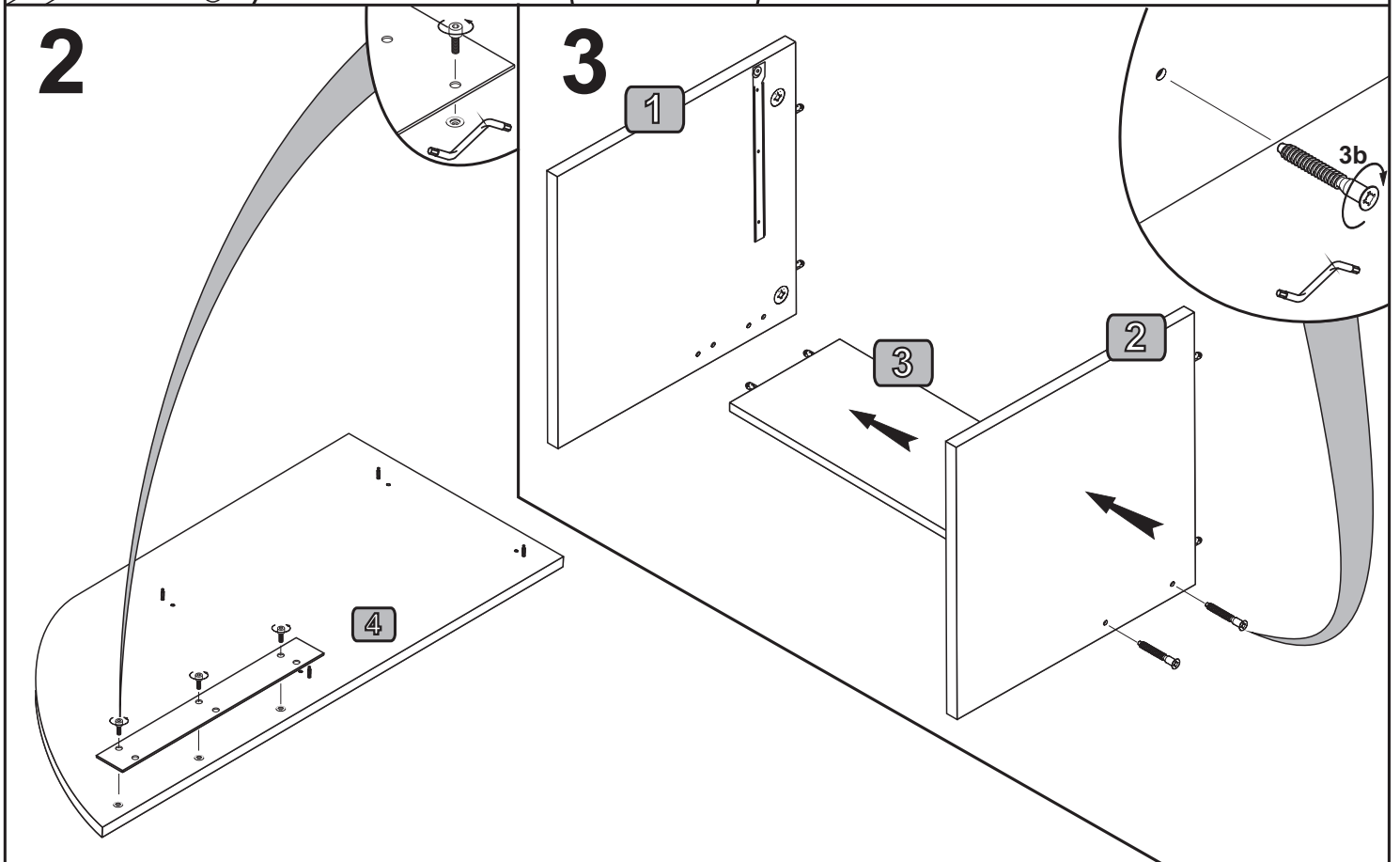
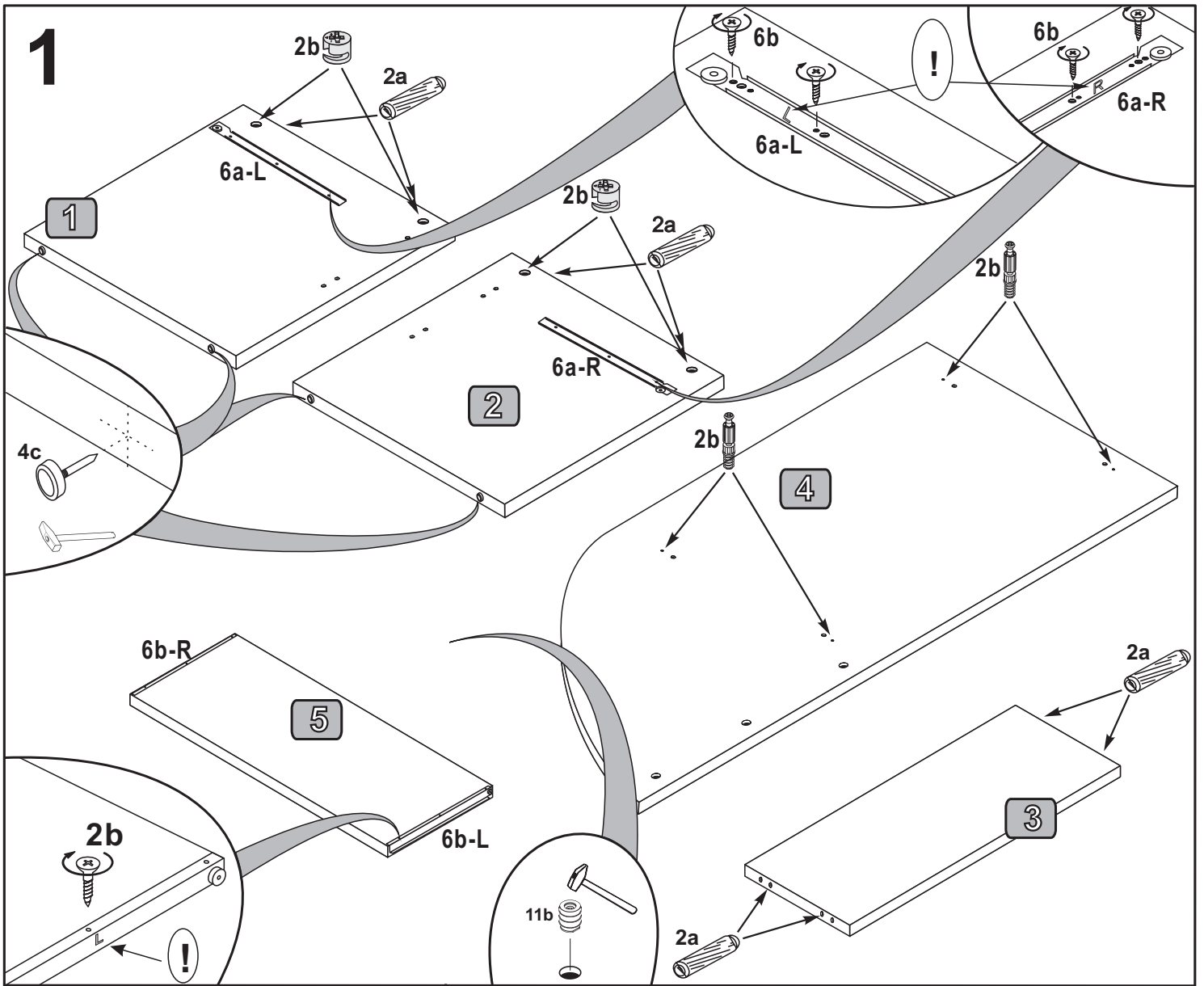
Vor die montage, bitte beiliegende anweisungen folgen

Antes de començar, adiar se aos conselhos de montagem em anexo

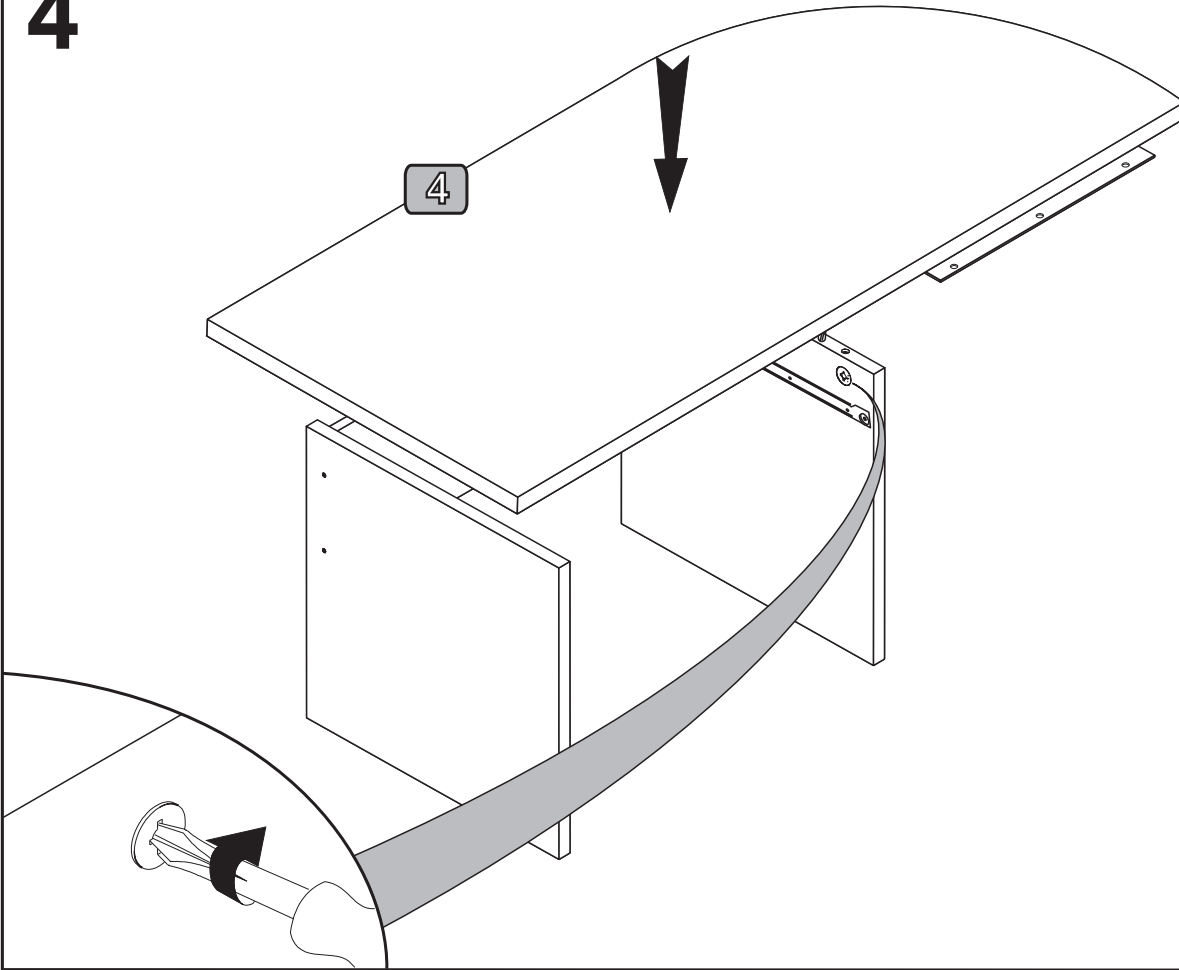
Antes de empezar consulte los consejos para el montaje

Przed rozpoczęciem zapoznać się załączoną instrukcją montażu

Bag 2	 a 8	 b 8	 c 4	Bag 3	 b 12	 c 45	Bag 4	 c 4
Bag 6	L  R  a 1L+1R	L  R  a 1L+1R	 b 3,5x13 10	Bag 11	 a 1	 b 6	 c M6x12 6	



4



5

