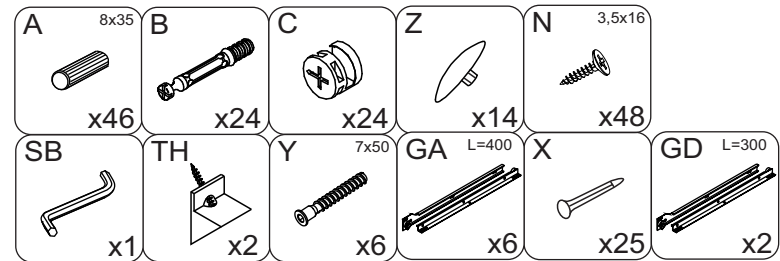
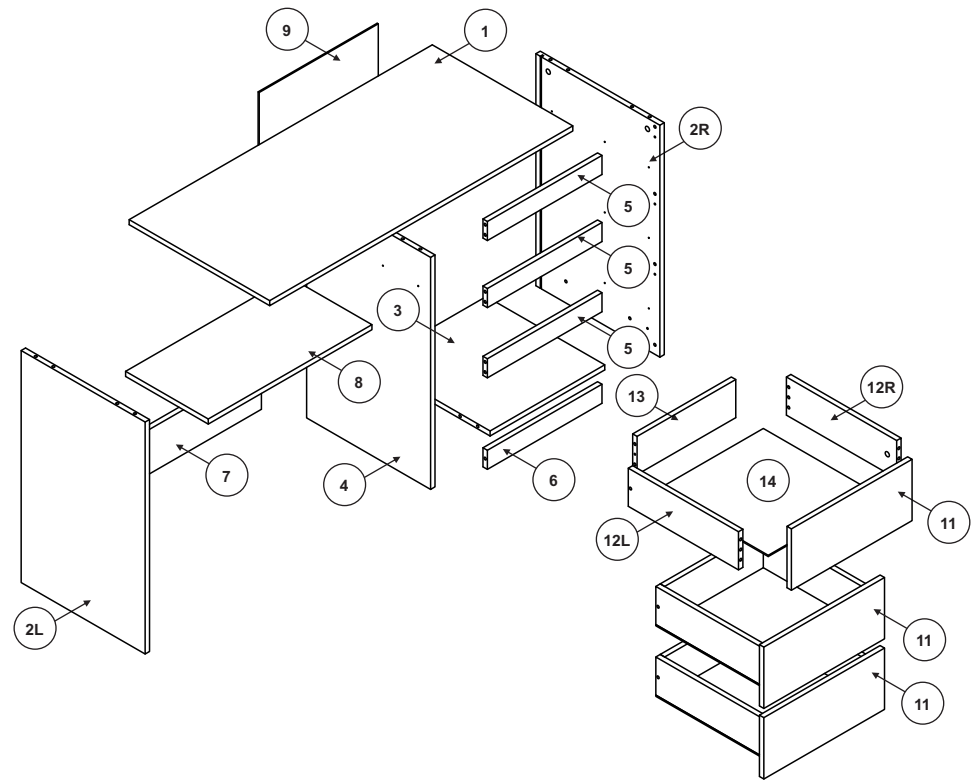
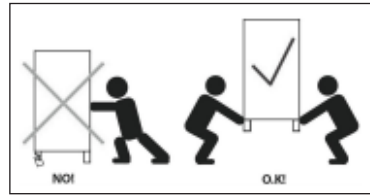
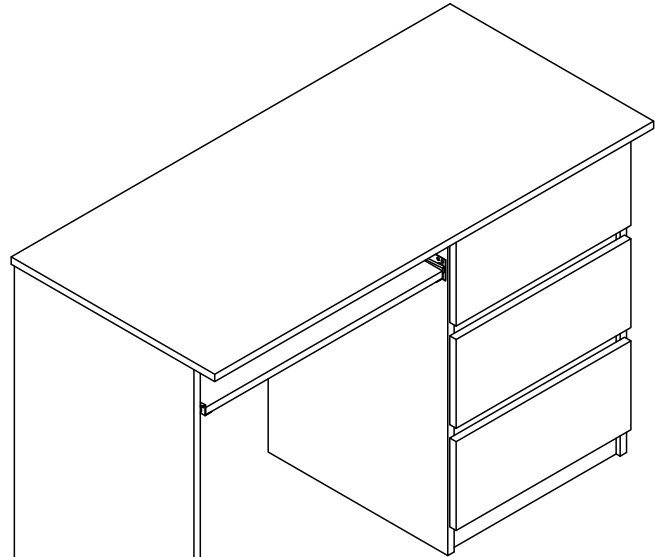
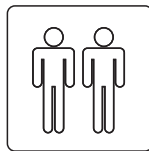
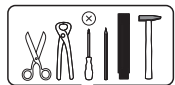


# COSMO C09

## Biurko

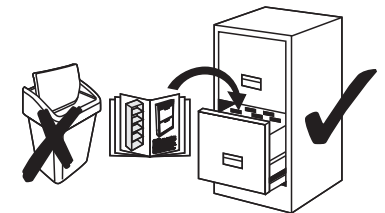
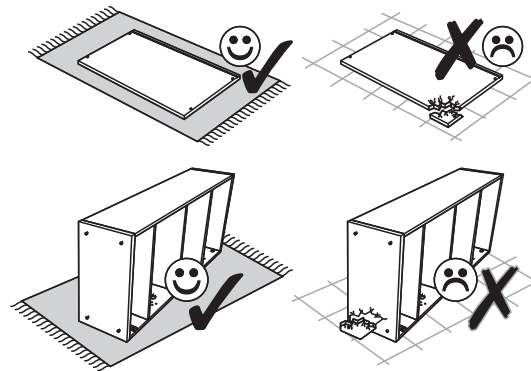


- |                                         |                                     |
|-----------------------------------------|-------------------------------------|
| <b>(D)</b> Montageanleitung             | <b>(GB)</b> Assembly instructions   |
| <b>(FR)</b> Notice de montage           | <b>(IT)</b> Istruzioni di montaggio |
| <b>(NL)</b> Handleiding voor de montage | <b>(PL)</b> Instrukcja montażu      |
| <b>(CZ)</b> Montážní návod              | <b>(SK)</b> Návod na montáž         |
| <b>(HU)</b> Szerelési útmutató          | <b>(RO)</b> Instrucțiuni de montaj  |
| <b>(TR)</b> Montaj talimatı             | <b>(RU)</b> ИНСТРУКЦИЯ ПО МОНТАЖУ   |

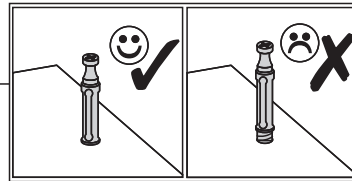
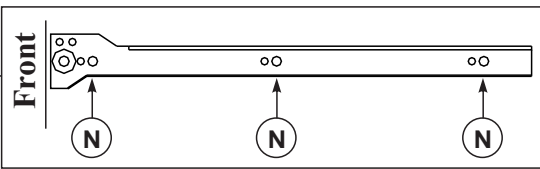
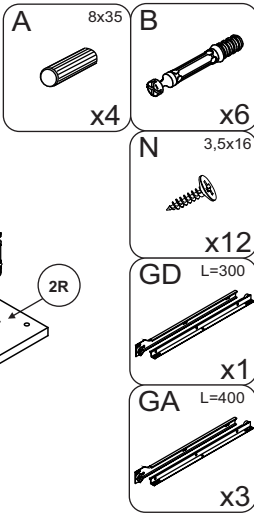
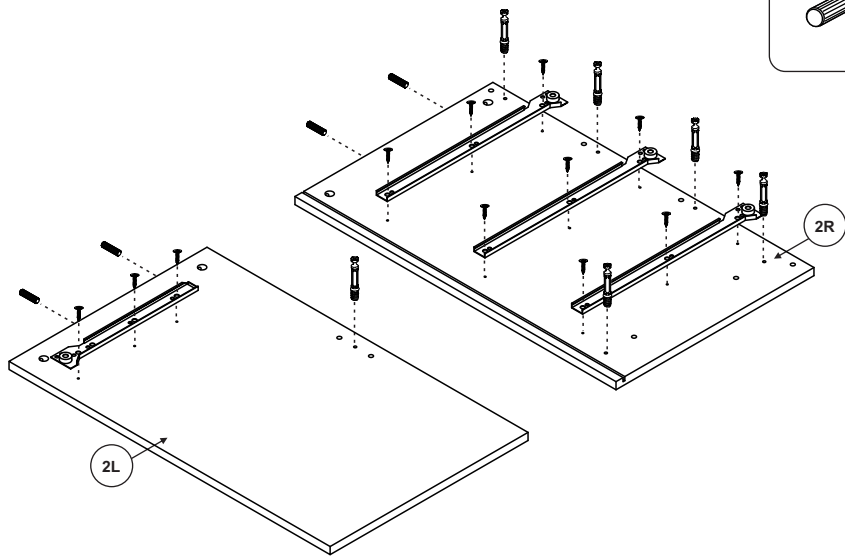
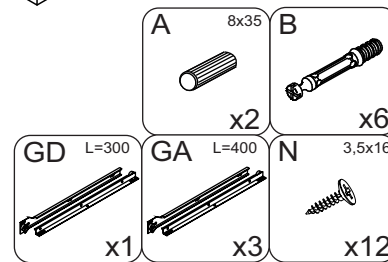
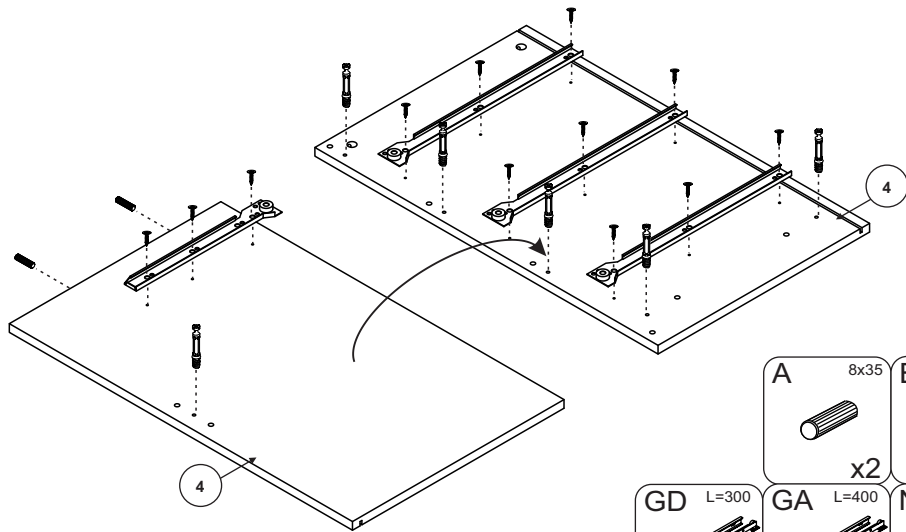
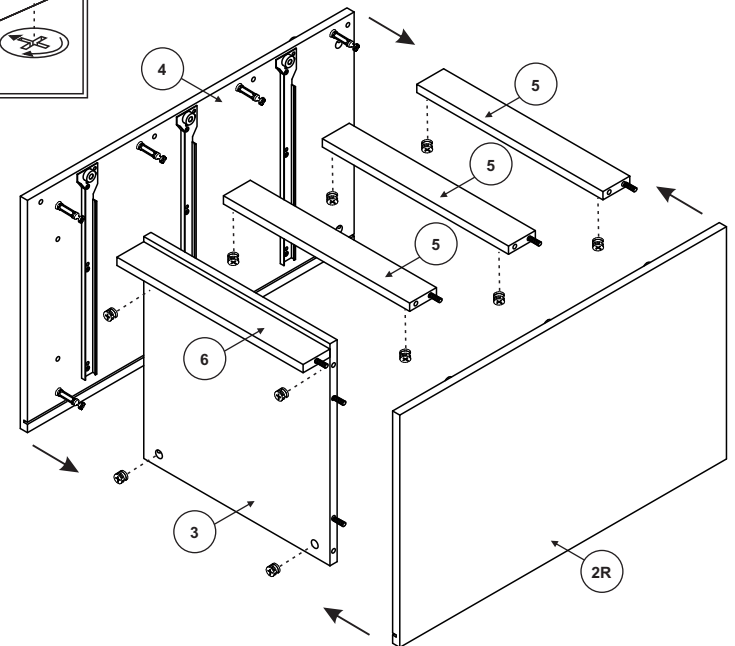
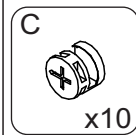
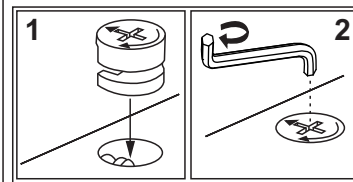
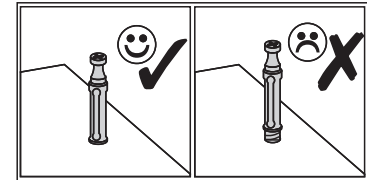
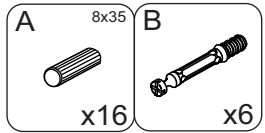
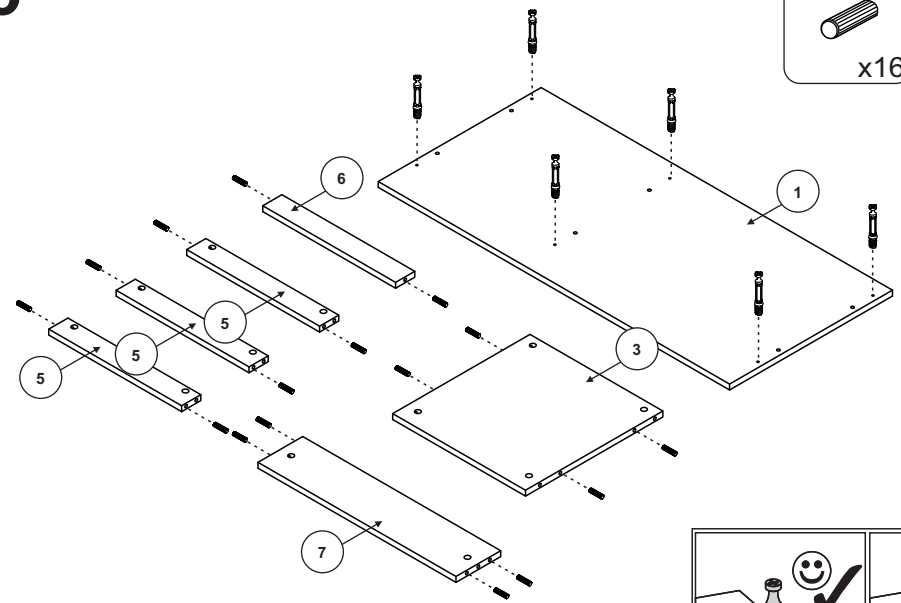


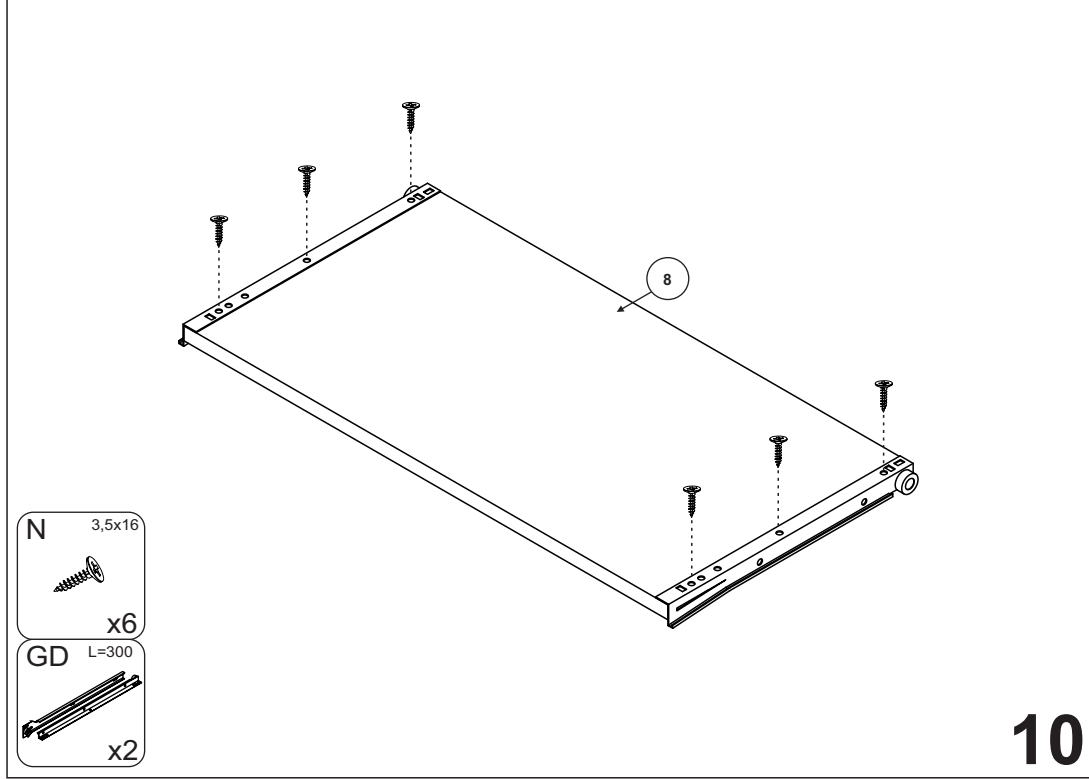
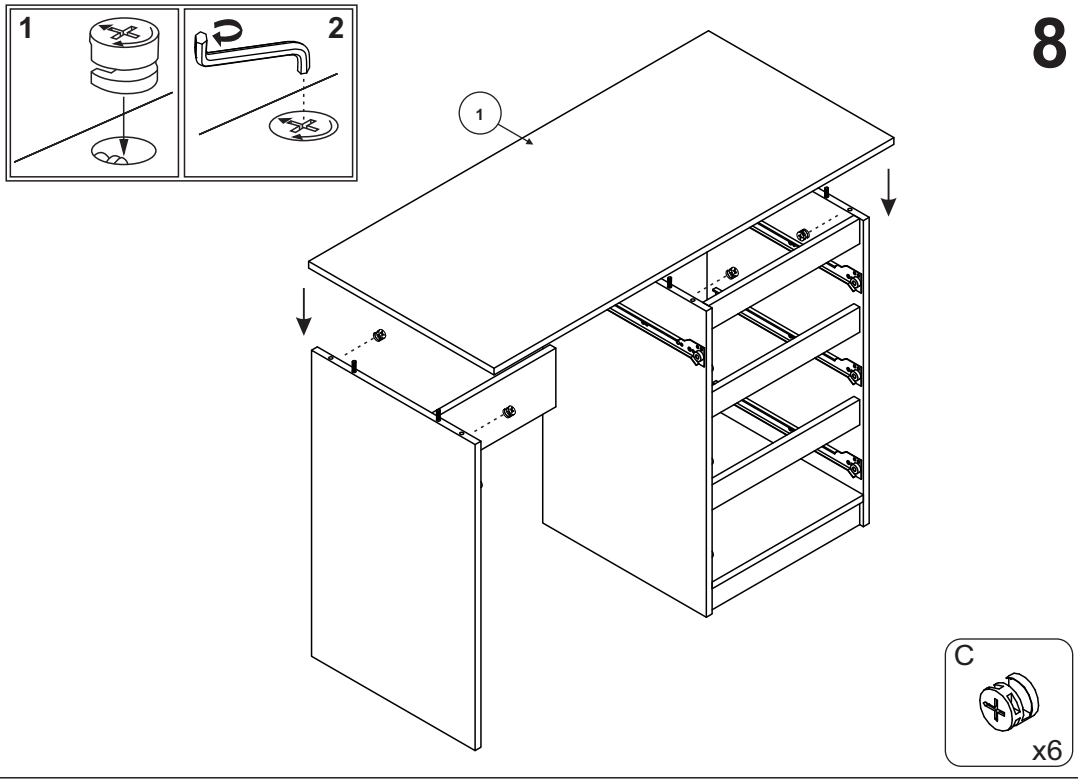
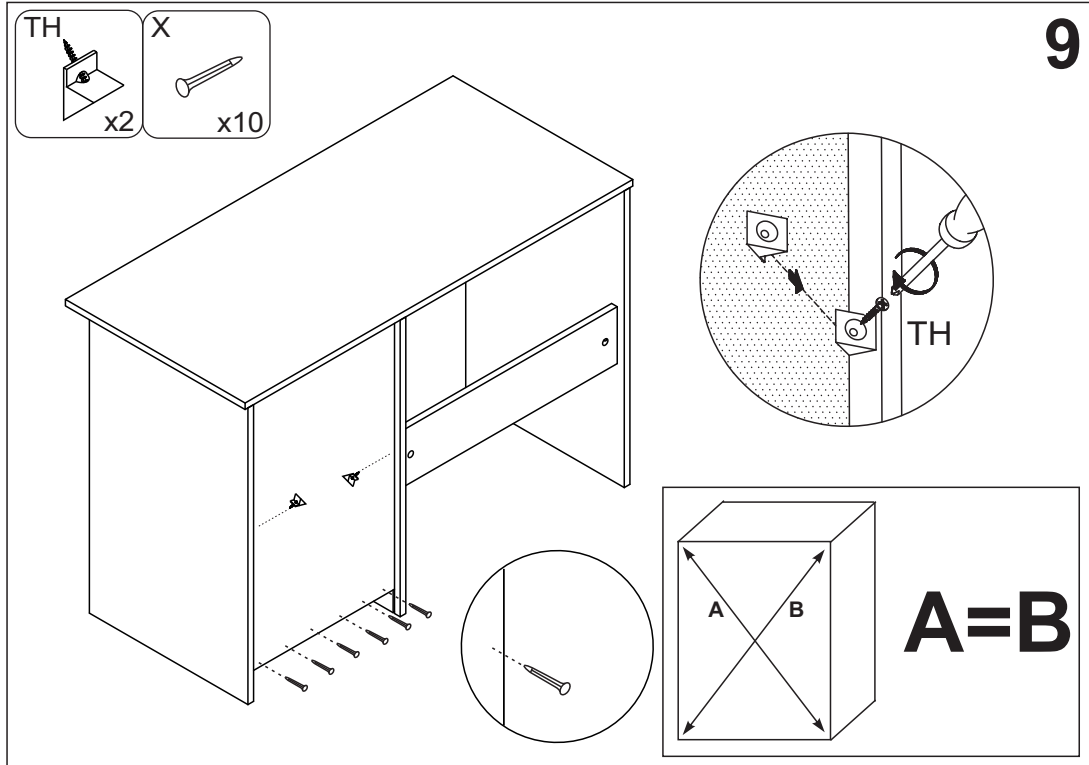
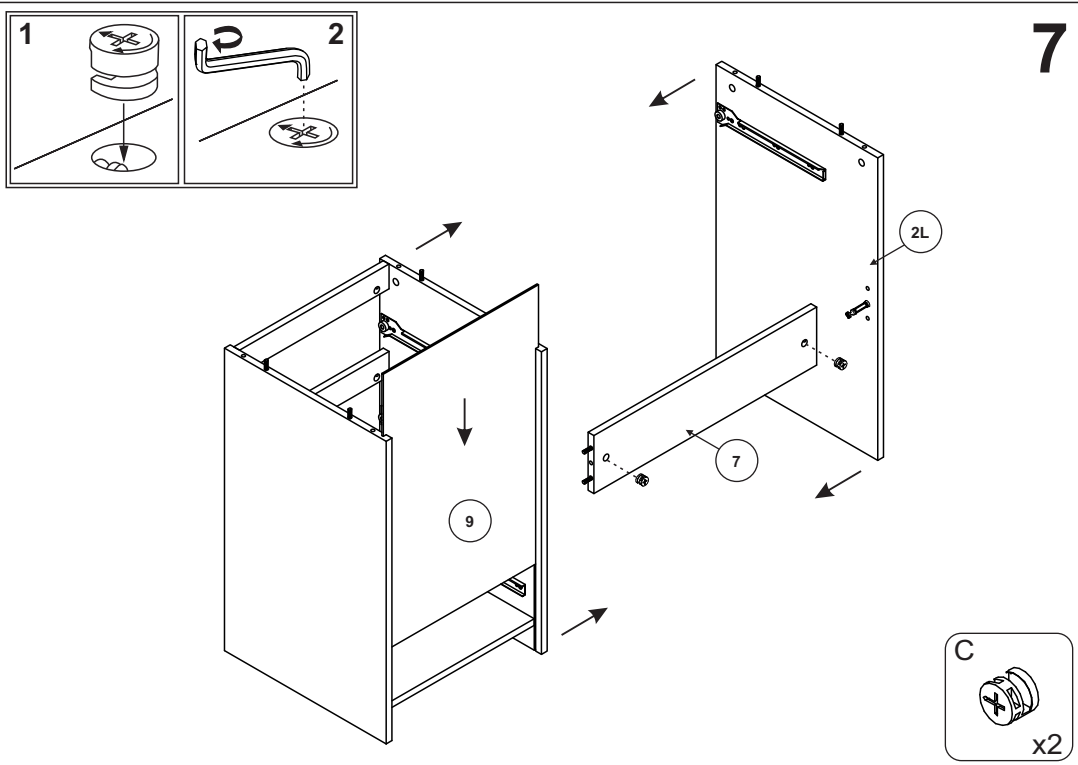
2 - 2,5

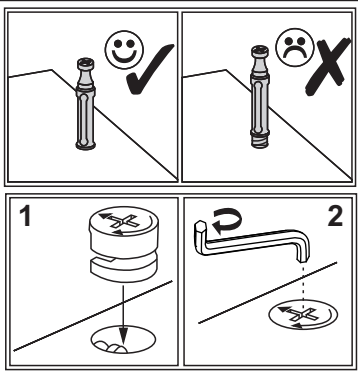
1



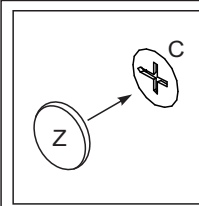
2

**3****4****5****6**





- |                           |                        |                 |
|---------------------------|------------------------|-----------------|
| <b>A</b><br>8x35<br>x24   | <b>B</b><br>x6         | <b>C</b><br>x6  |
| <b>N</b><br>3,5x16<br>x18 | <b>Y</b><br>7x50<br>x6 | <b>X</b><br>x15 |
| <b>SB</b><br>x1           | <b>GA</b> L=400<br>x6  |                 |



**11**

Diagram showing the assembly of three drawers. Part 11 is the main drawer body. Part 12L and 12R are side panels. Part 13 is the back panel. Part 14 is the bottom panel. A circular inset shows a hammer being used to tap a nail into a hole. A square inset shows a square with diagonals labeled 'A' and 'B', with the text **A=B** next to it.

**x3**

Diagram showing the final assembly of the desk. The desk top is being attached to the side panels. The drawers are being inserted into the desk body. Arrows indicate the direction of assembly.

**12**