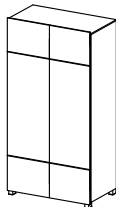
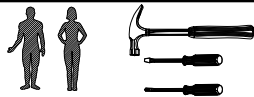


# GORDIA SZ2D



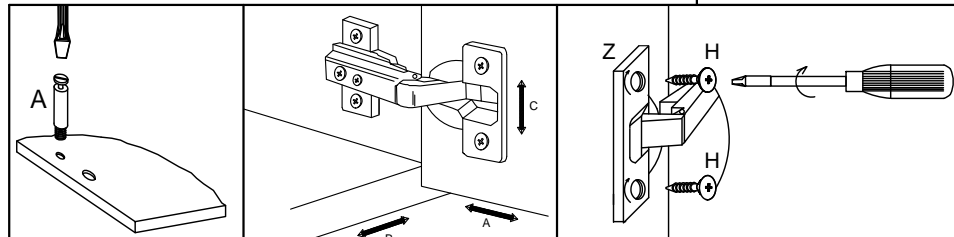
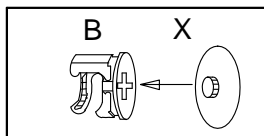
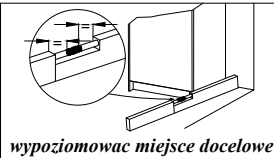
## Instrukcja montażu Assembly instructions



8	2	4	8	22	14	30	12	6	6	30	16	12	1

**UWAGA! WAŻNE!**  
KÓŁKI WBIJAĆ JAK NA  
PONIŻSZYM RYSUNKU  
W KRAWĘDZ ELEMENTU  
11.0 mm

**UWAGA!**  
**ATTENTION!**



No.	Stc.	L	W	T	POLYSK
1	1	800	500	16	
2	1	800	500	16	
3	1	1900	500	16	
4	1	1900	500	16	
5	1	768	480	16	
6	1	768	150	16	
7	2	396	340	15	
8	2	1282	396	16	15
9	2	396	340	15	
10	1	1914	782	3	

